

DSCSigner Installation Manual for Windows

Contents

1. DSCSigner installation in Windows	3
1.1. DSC token driver installation	3
1.2. DSCSigner installation	4
2. Browser Configuration.....	9
2.1. Mozilla Firefox	9
2.2. Google Chrome.....	12
2.3. Microsoft Internet Explorer	13

1. DSCSigner installation in Windows

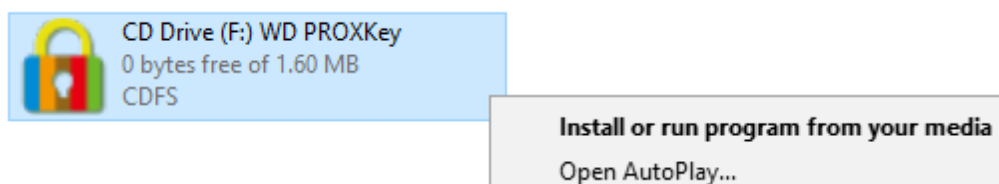
The following are the prerequisites for installing DSCSigner utility:

- Oracle Java 8 Java Runtime
- Driver for DSC token in Windows

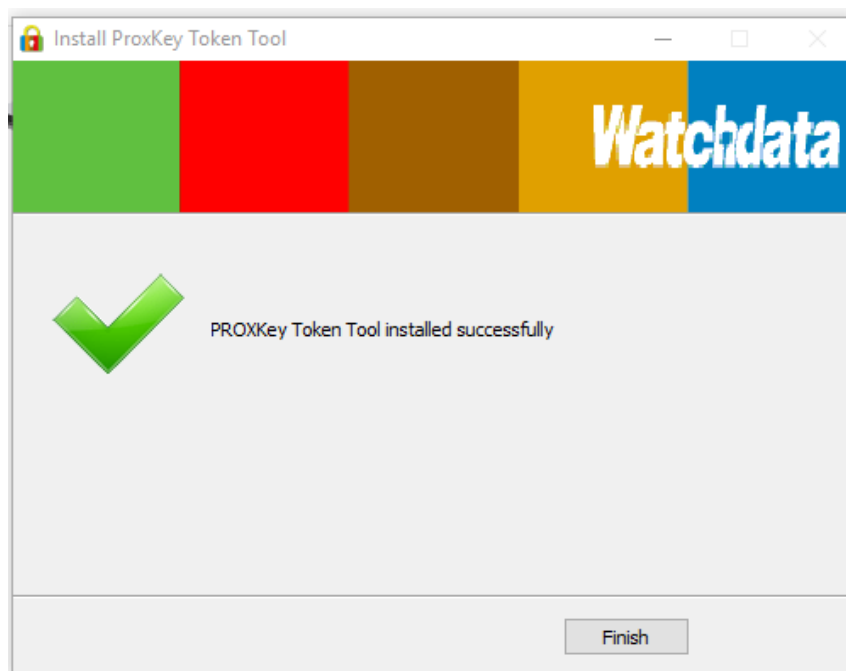
1.1. DSC token driver installation

The installation process for ProxKey token driver is explained. Other DSC tokens will have a similar setup for token driver installation.

Connect the DSC token. Open This PC from start menu. Now right click on (WD ProxKey) Icon and choose option **“Install or run program from media”**

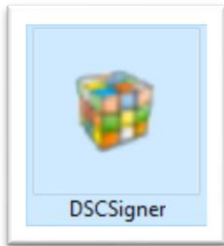


Install the driver by completing the setup. Once the installation is complete, an installation completed window is shown. Click on Finish button.

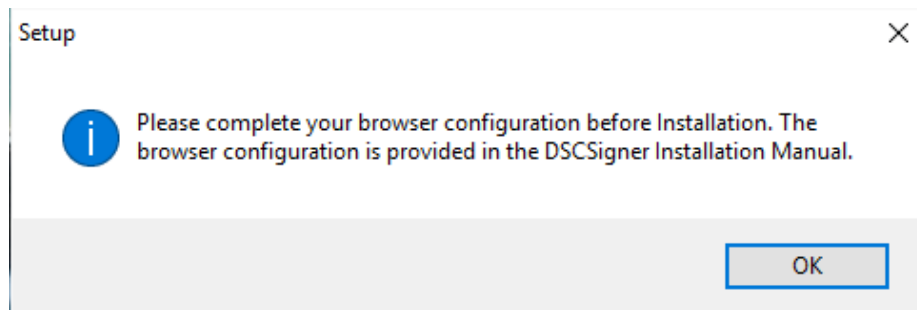


1.2. DSCSigner installation

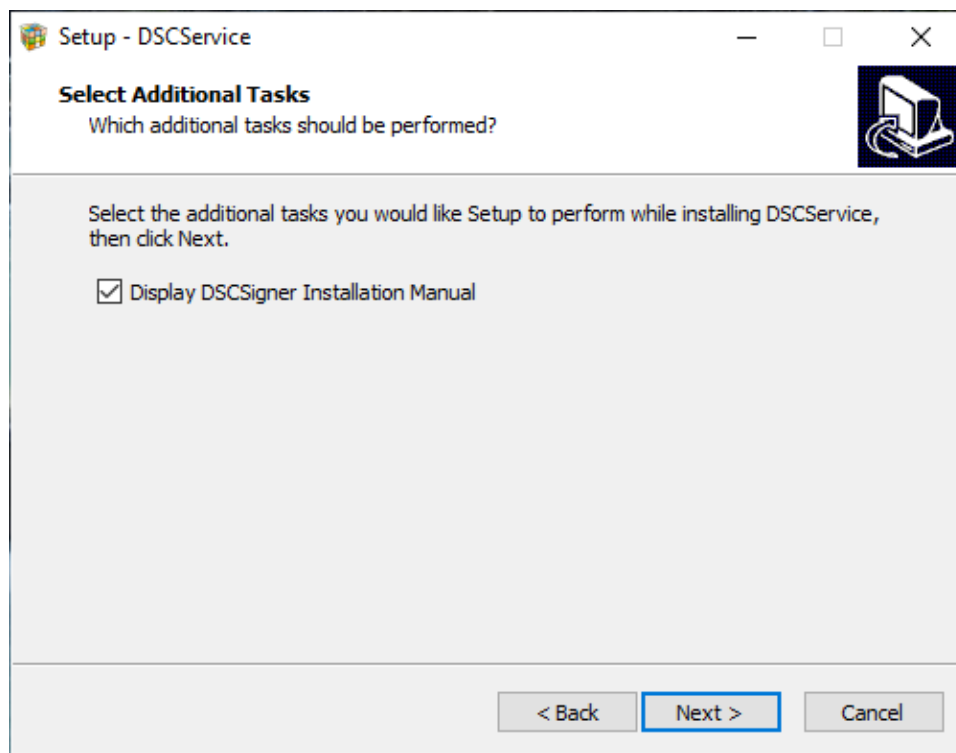
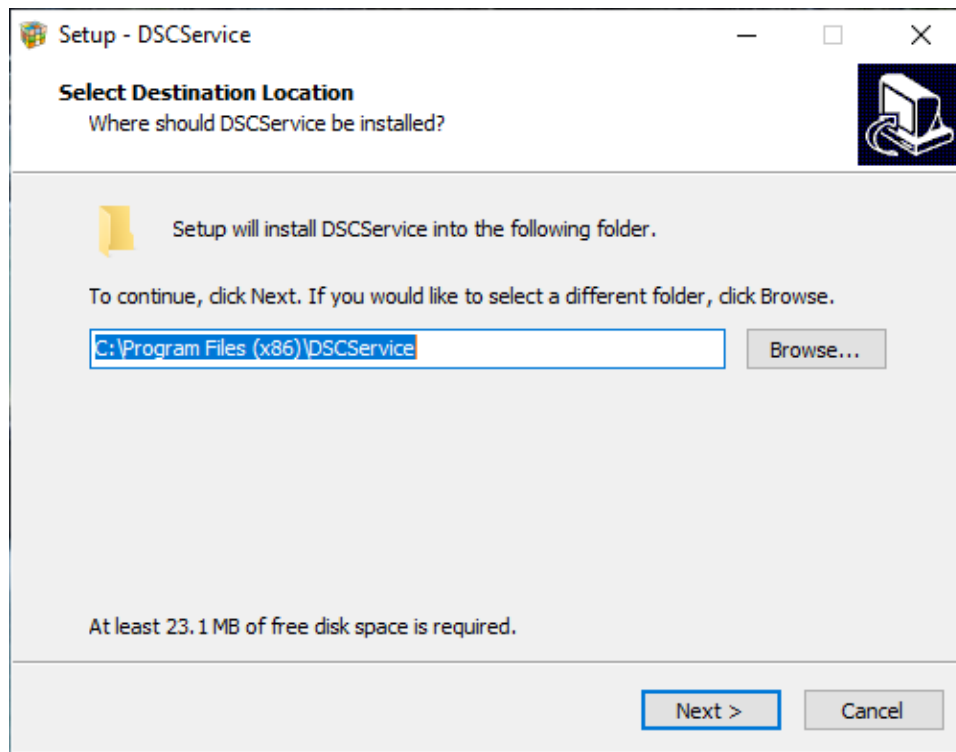
1. The token driver installation in the previous step must be completed successfully before installing the DSCSigner utility. Double click on this icon to install DSCSigner software.



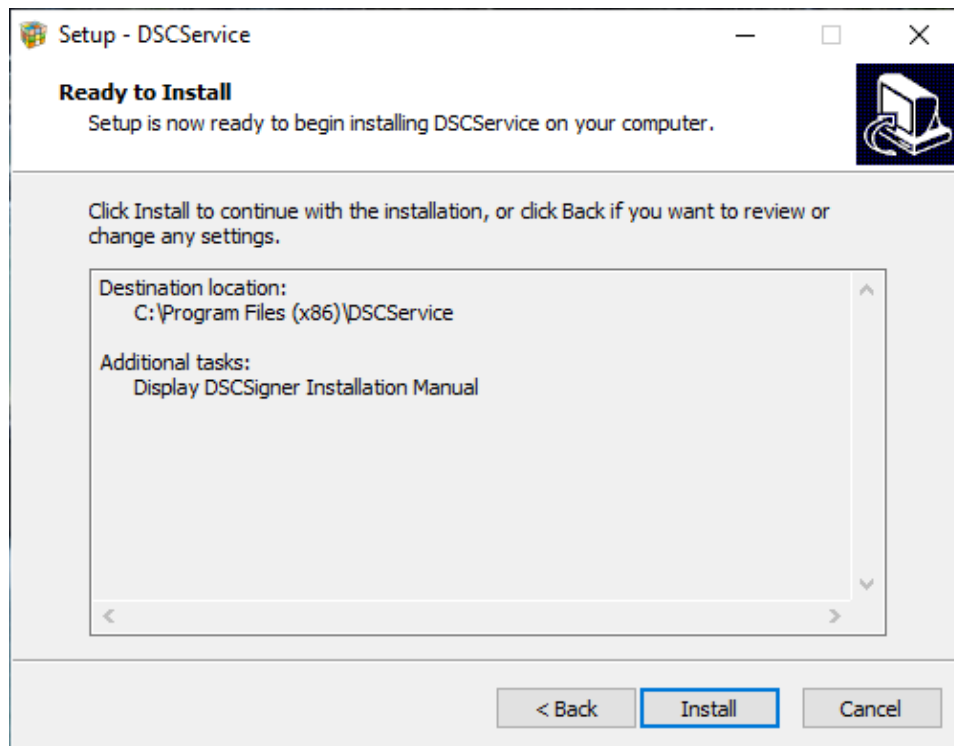
2. An initial message is shown to configure browser before installation. See [Browser Configuration](#) section. Click ok to proceed to next install stage.



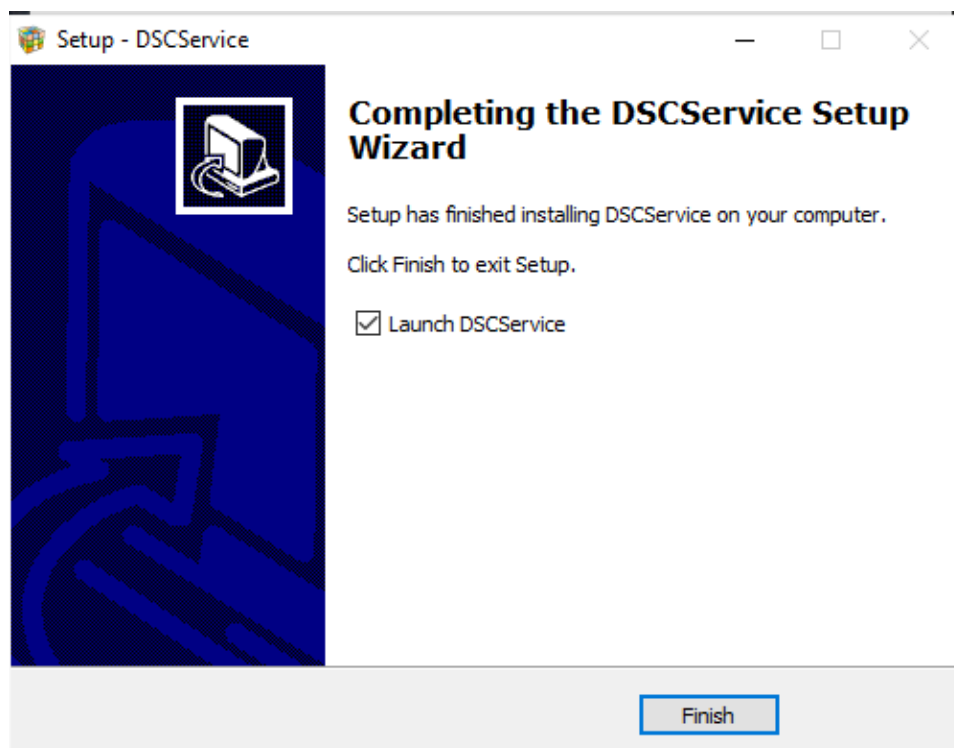
3. Complete the Installation process by clicking 'Next' button to complete the installation of DSCSigner.



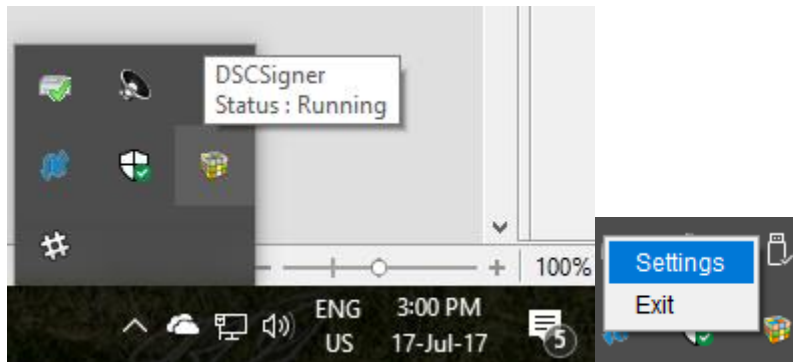
4. Click on Next to install to Default location and to proceed to next stage.



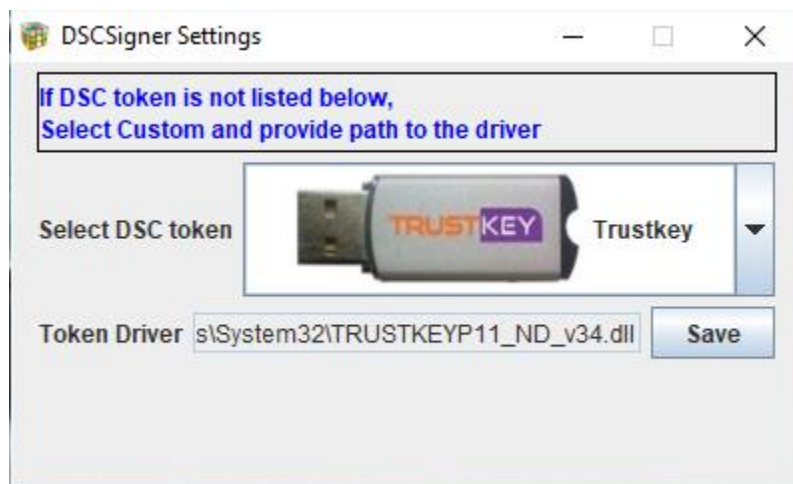
5. Click on the Install button to install the DSCSigner software. Once the Installation is complete, a window appears as shown below indicating the setup is complete. Click Finish to launch DSCSigner.



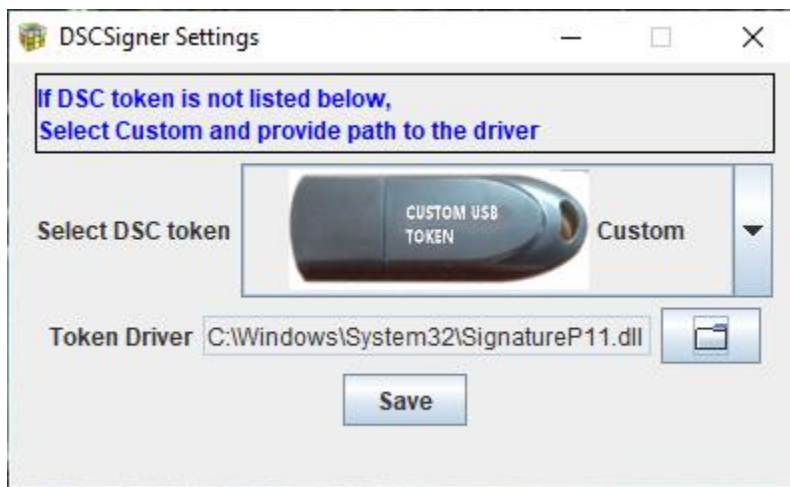
6. After successful installation, an icon for DSCSigner will be seen at the right side of the taskbar with status as Running (if the token is plugged in). To change the token driver configuration, right click on the DSCSigner icon and click on Settings.



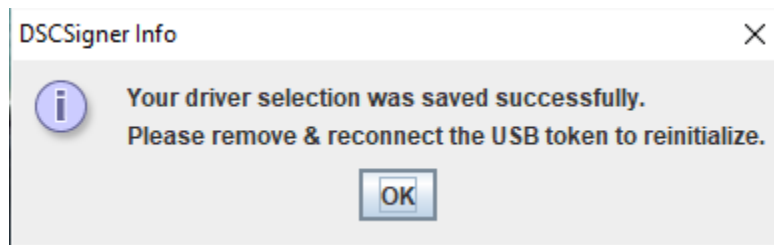
7. A window appears with title DSCSigner Settings. Select the appropriate token driver and click on Save button.



8. If the token available is not listed in the predefined USB token list, select the Custom option. Then click on the folder icon to manually select the matching driver file for the custom token. Select the appropriate file and click Save button to save the driver.



9. Disconnect and Reconnect token to reinitialize token with new driver.

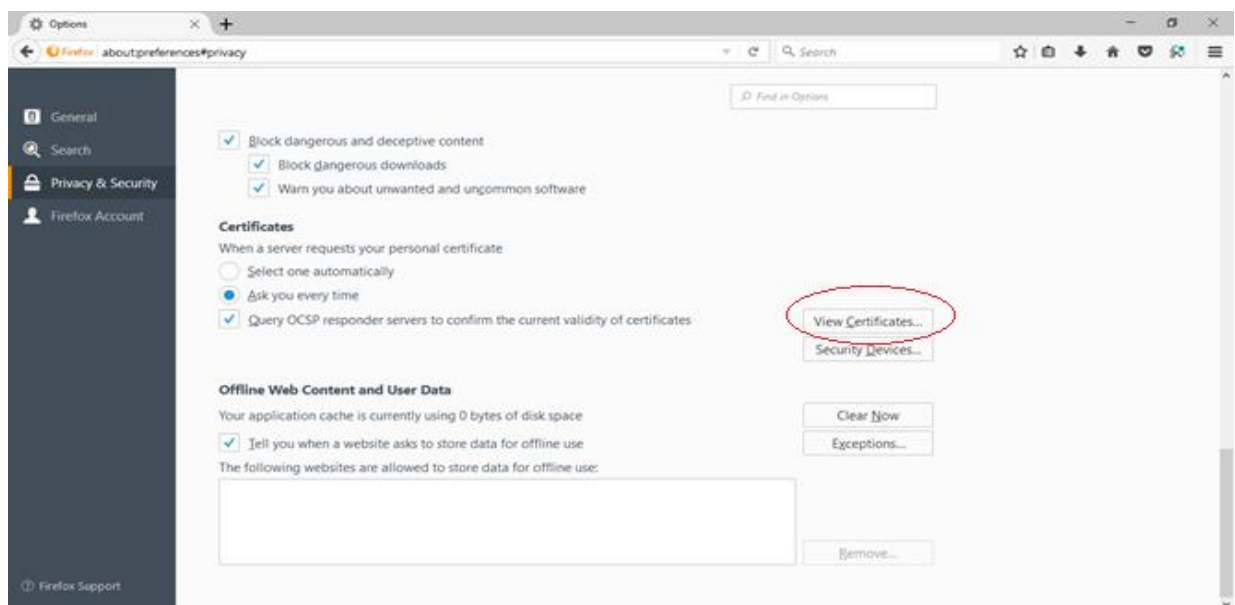


2. Browser Configuration

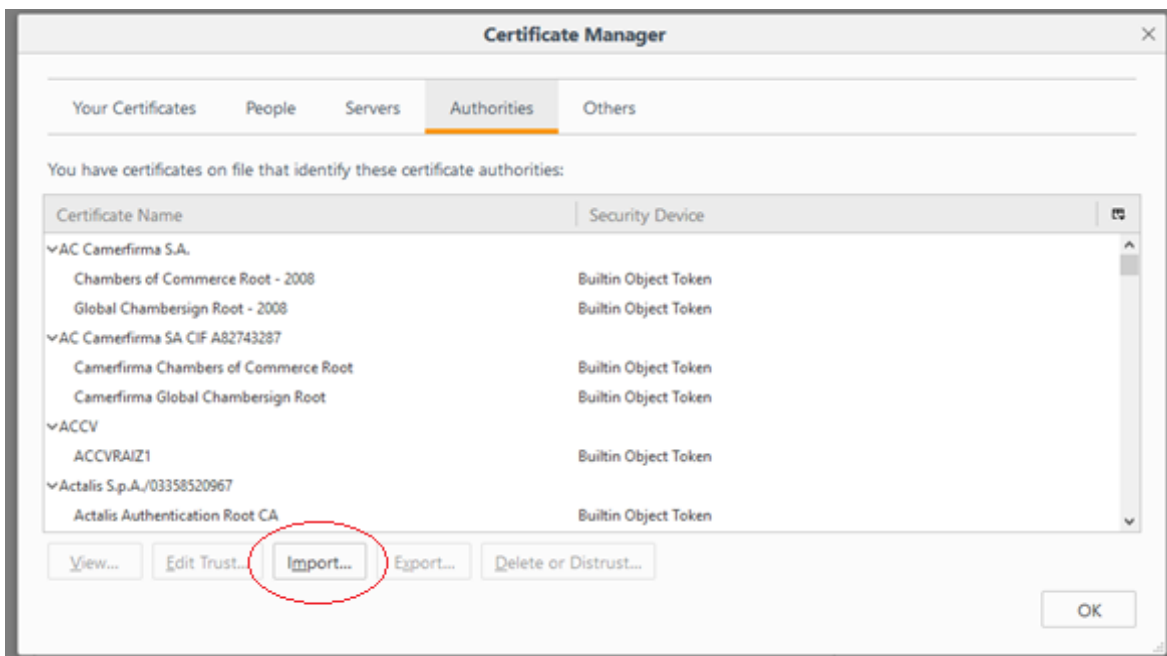
The browser must be configured prior to the use of DSCSigner tool to configure the browser to trust the DSCSigner Client. The configuration for the browsers are given below.

2.1. Mozilla Firefox

1. Open Mozilla Firefox and type the following in the address bar and press enter.
about:preferences#privacy
2. Scroll down to view the Certificate section and click on the **View Certificates** button to open the certificate manager.



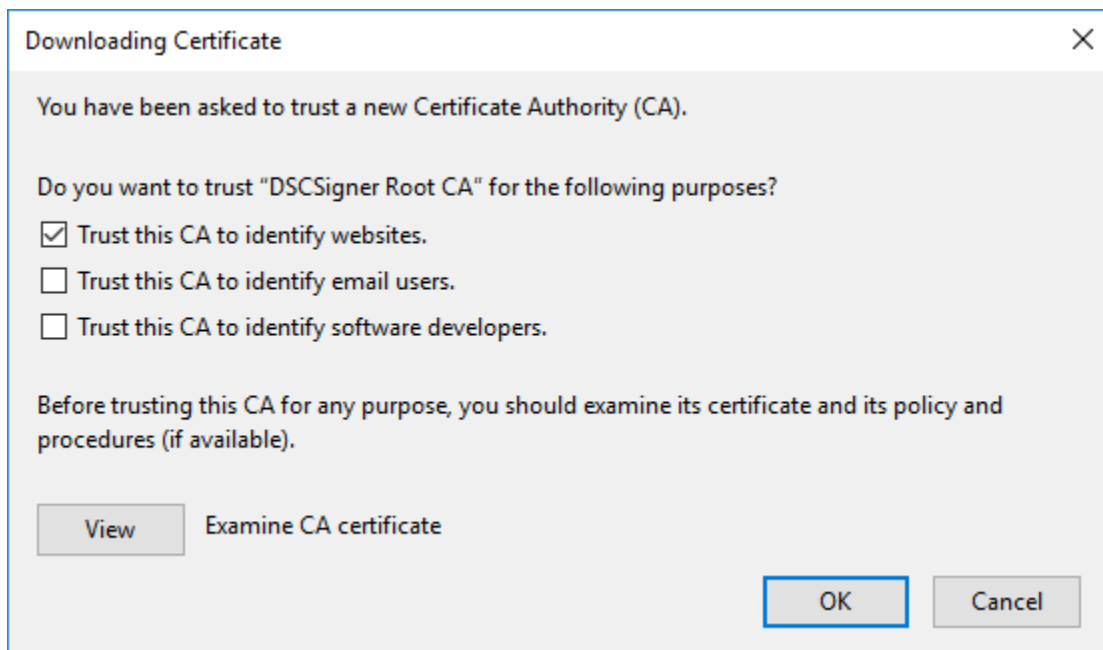
3. In the Certificate Manager popup, click on the Authorities tab and then click on Import button.



- Browse to DSCSigner/ssl folder and select the rootCA.crt file and click on the Open button.



- Check the **Trust this CA to identify websites** and click on OK button to complete the root certificate export.

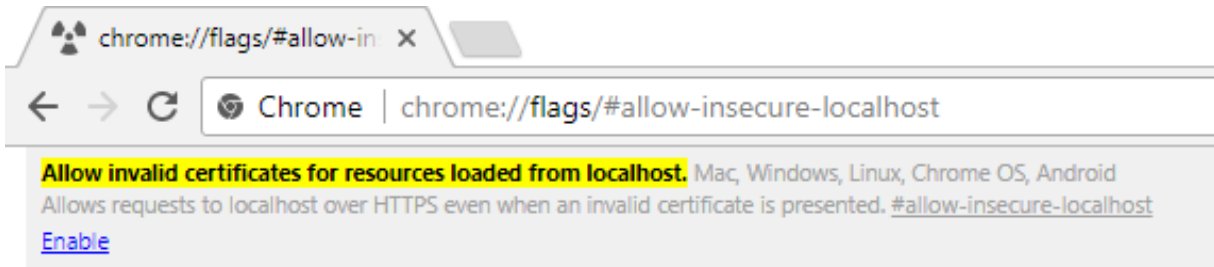


6. The configuration is complete and now you can use Mozilla Firefox for digital signing using DSCSigner.

2.2. Google Chrome

1. Open Google Chrome browser and type the following in the address bar and press enter:

chrome://flags/#allow-insecure-localhost



2. Click on Enable link to allow Chrome to securely communicate with DSCSigner client. Now to apply the settings and restart Chrome browser click on Relaunch Now button at the bottom of the page

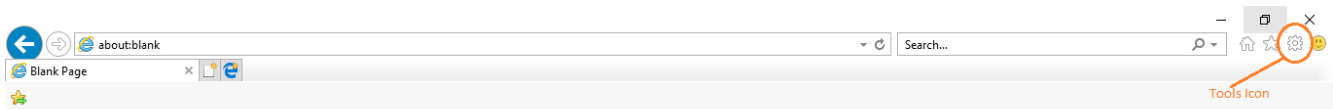
Your changes will take effect the next time you relaunch Google Chrome.

RELAUNCH NOW

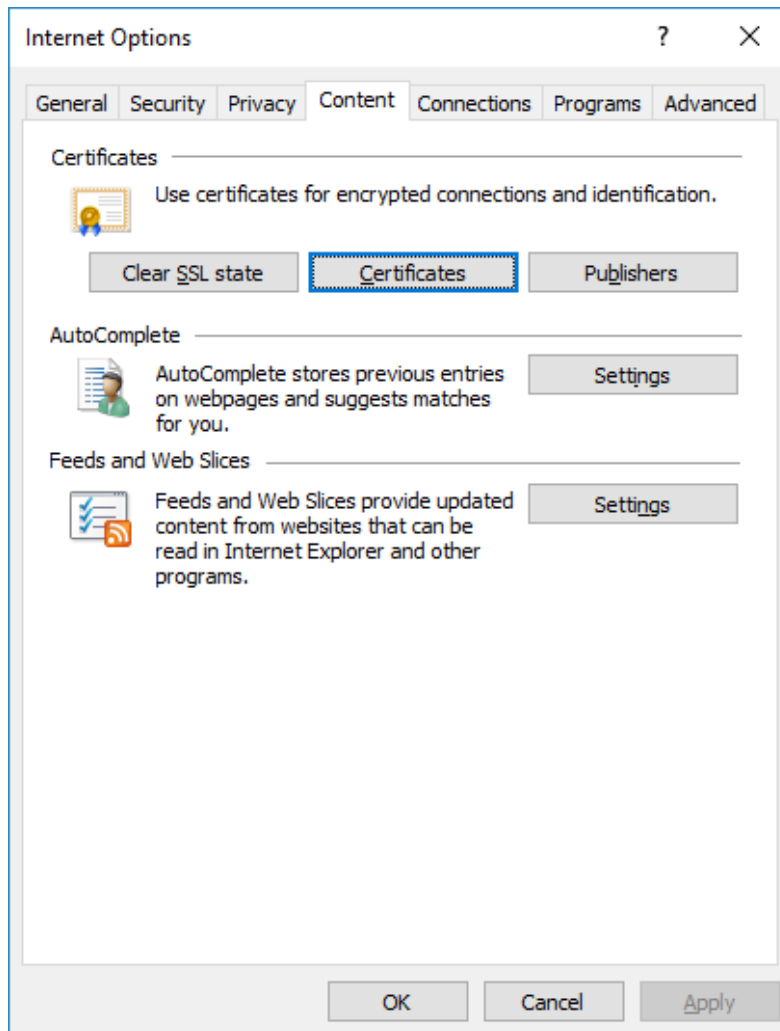
3. The configuration is complete and now you can use Google Chrome for digital signing using DSCSigner.

2.3. Microsoft Internet Explorer

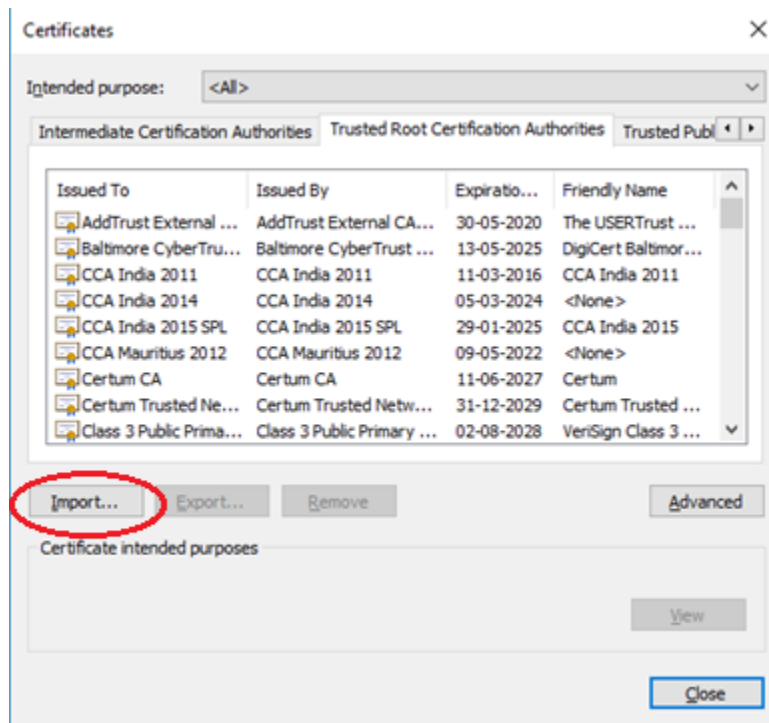
1. Open Internet Explorer and click on the Tools menu and then click on Internet Options.



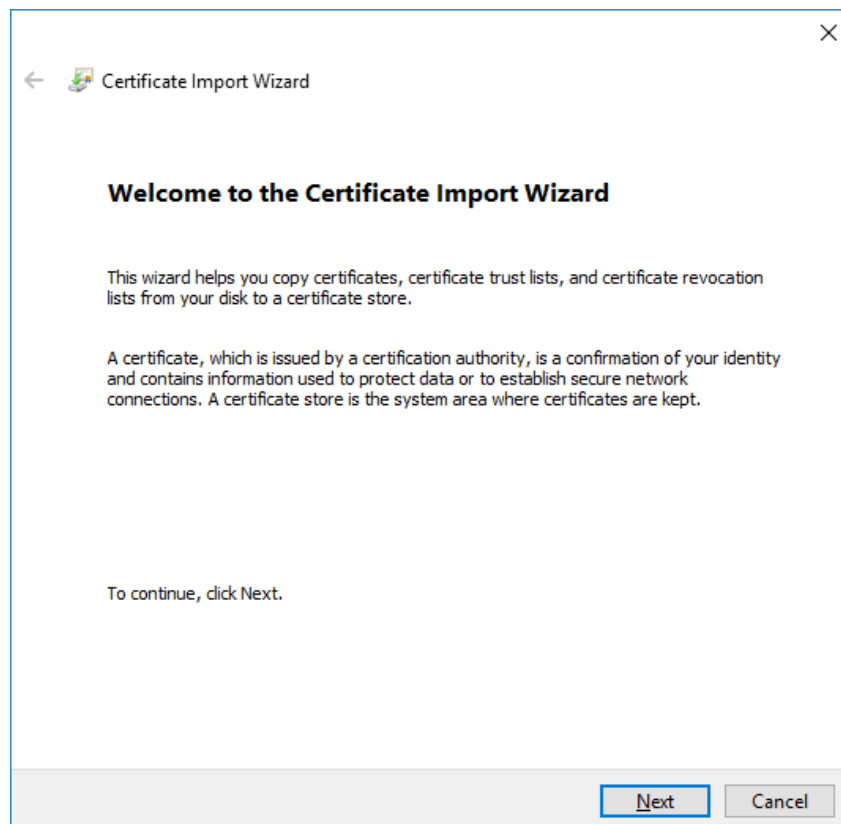
2. Select the Content tab and then click on **Certificates** button



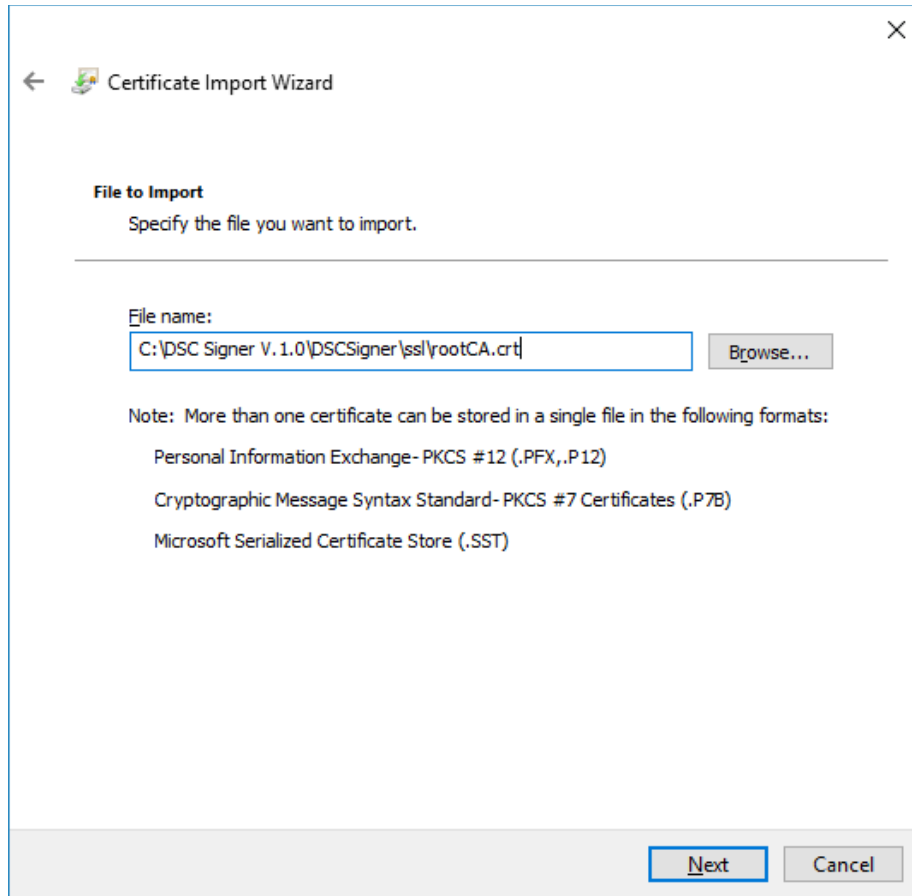
3. Now click on the **Trusted Root Certificates** tab and click on **Import** button.



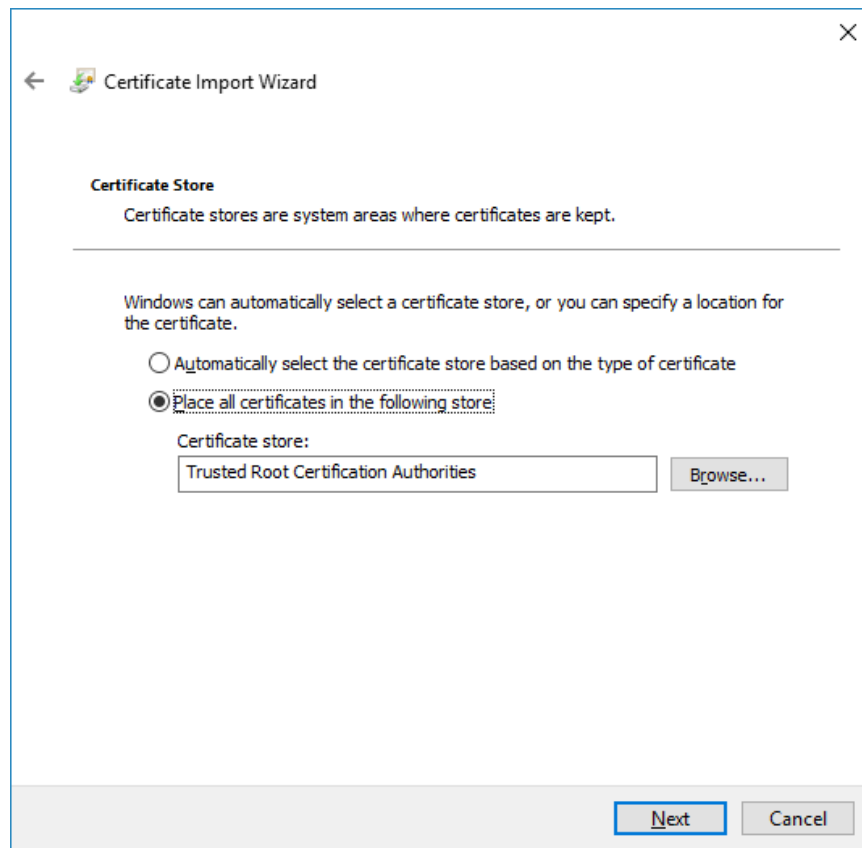
4. The Certificate **Import wizard**, click on **Next** button.



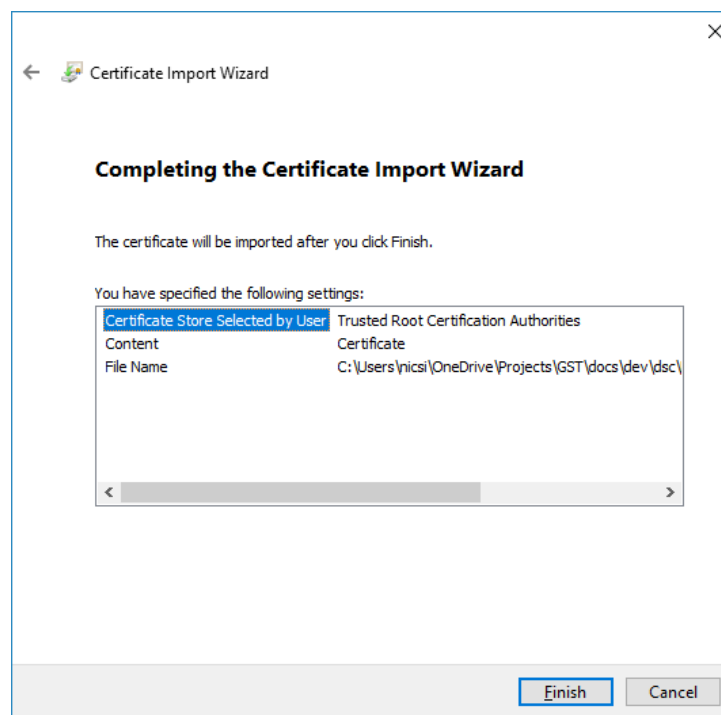
5. Browse the rootCA.crt file provided in the **DSCSigner\ssl** folder and click on Next button.



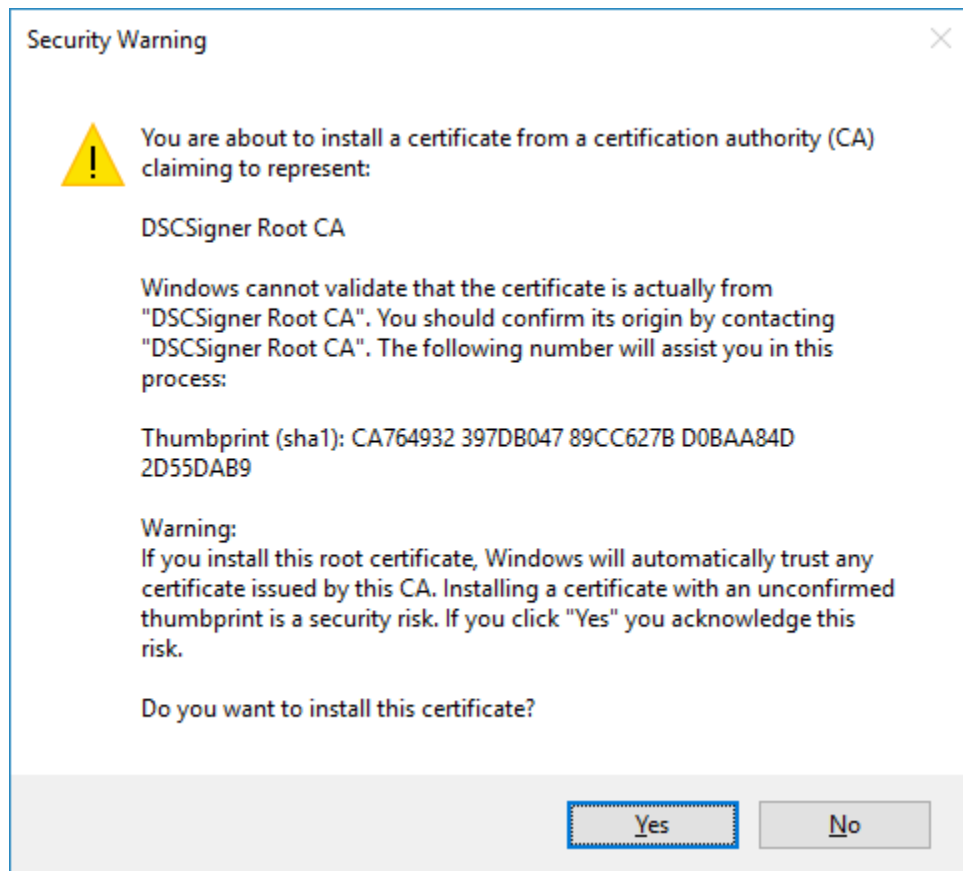
6. Click Next on the following screen



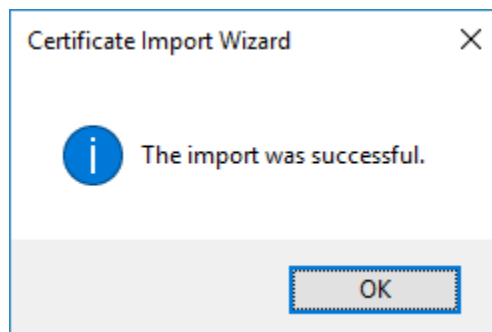
7. Then click Finish button



8. Click on **Yes** in the following dialog



9. The following message will be shown. Click **OK**.



10. Now you can use internet Explorer for digital signing using DSCSigner.